

EnwaMatic® Maritime

Water treatment for HVAC
and engine cooling water

NO CHEMICALS NO PROBLEM



Corrosion inhibition through
pH regulation



Scale control



Side stream filtration to
< 5 microns



Environmental control
of bacterial growth









Air separation





EnwaMatic®
Maritime benefits

-  Environmentally sound technology
-  Continuous filtration and self-regulating water treatment
-  Reduced energy consumption
-  Extended life time
-  Reduced service and maintenance costs
-  Cost effective alternative to chemical dosing

EnwaMatic®

The stainless steel filter tank is insulated with thermo foam and encapsulated in a tough plastic outer casing. The design incorporates side steps for easy maintenance, which double as lifting handles. Mounting holes are fitted as standard for securing the units to the floor.



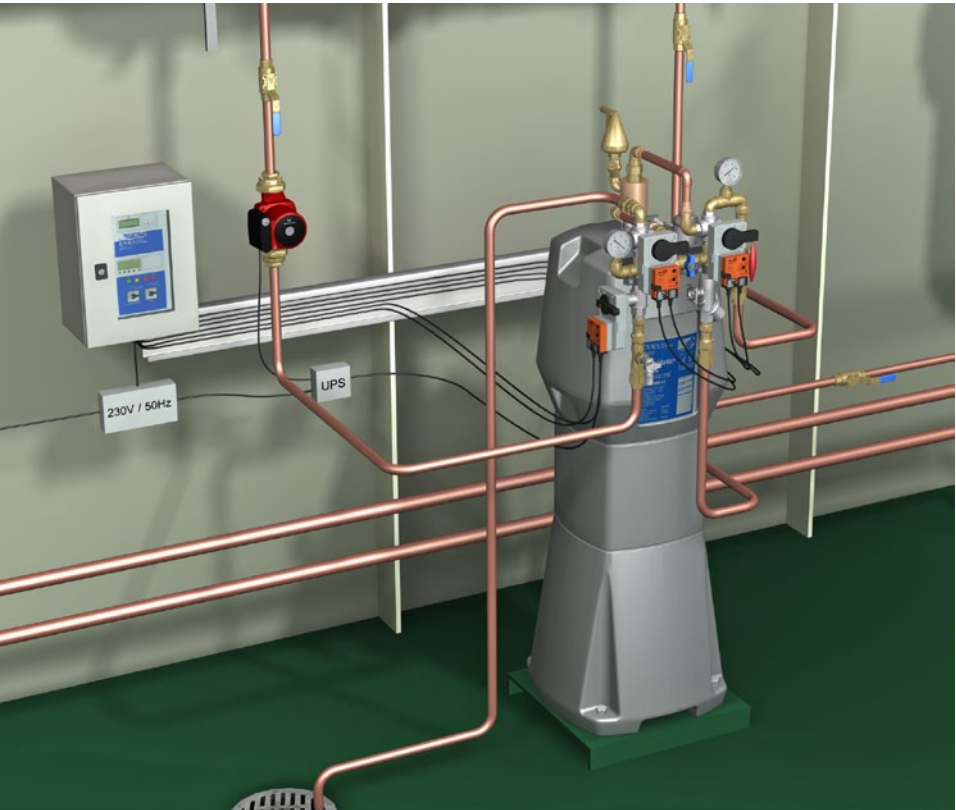
EnwaMatic® Maritime Technical Information (EMM)

	EMM F1	EMM F2	EMM F3
Total System Volume (m3)	0 - 7	0 – 20	0 - 40
Power (W)	25-30	25-30	25-30
Width (mm)	550	600	600
Depth (mm)	550	600	600
Height (mm)	1500	1700	2000
Weight empty (kg), inclusive automatic head	30 kg	45 kg	50 kg
Weight full (kg), inclusive water.	90 kg	200 kg	240 kg

Capacity is the total volume of water within the closed loop of cooling/heating water. Weight empty is the dead weight without filter media. Weight full is the calculated weight inclusive filter media and water. Optional: real time monitoring with alarm functions.

Automated Backwash
Option Features include:

- A fully enclosed, IP 54 rated, wall mounted control panel.
- Programmable log for operation and backwash.
- Single phase, 220 v supply, 24 volt output as standard.
- Visual alarm and output signal for optional connection to IAS.
- Alarm test function.
- Manual override function.



The World, ResidenSea

I have been working in the air conditioning and refrigeration business for forty years, on land and at sea and used both chemical and anodic-cathodic methods to treat the water systems.

ENWA is definitely the best I have come across. The low maintenance and good reliability is what I like the best with ENWA.

Didrik Stene, Chief Refrigeration Engineer, The World
Read more on www.enwa.com



Hurtigruten

After 110 000 hours of operation our recent service and inspection has shown no corrosion, we are very satisfied with the performance of the EnwaMatic® units

Pål Åsheim, Chief Engineer, Hurtigruten ASA

The EnwaMatic® Maritime Technology has obtained approval from engine manufacturer Wärtsilä.

The recent approval of the EnwaMatic® water treatment system was preceded by several years approval period with the final test running for 16,378 engine hours. In connection with the intense testing period, the ship owner Color Line, operating several cruise ferries, has decided to change all closed loop water systems for engines and HVAC systems on their entire fleet to EnwaMatic® Maritime.



©Color Line AS

Critical components of the engines onboard the Color Fantasy Cruise Ferry was examined in the laboratory prior and after the long lasting test.

*EnwaMatic® - Technology:
Water samples from the EnwaMatic® technology.
Day 1 to day 30 from left to right.*



Approval from:



ENWA Norway
Post box 257 Forus
4066 Stavanger
+47 51 63 43 00
post@enwa.com

ENWA Sweden
Backa Strandgata 8
422 46 Hisings Backa
+46 31 742 92 50
info@enwa.se

Enwa UK
Unit A, Scotlands Industrial Estate
Coalville Leicestershire, LE67 6JJ
+44 01530 830 354
sales@enwa.co.uk

ENWA After sales &
International Services
Post box 35
5586 Vikedal, Norway
+47 52 76 16 50
service@enwa.com